

TVIX

mini C-2000U Lite



DNICO

Safety Precautions



Keep TViX away from heat or fire. Do not block any ventilation openings. Ensure that a free airflow is maintained around the appliance.



Do not expose TViX to oil, smoke, water, humidity or dust.



Magnetic materials may erase the data in your TViX, so keep all magnetic materials away from it.



Do not disassemble the device; it may cause malfunction or fire.



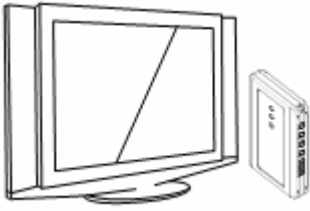
Do not drop the TViX mini. Doing so may cause critical damage to the internal hard drive.



Do not touch the power plug with wet hands or use defective power cables & loose outlets. It may cause electric shock or fire.

After connecting your TViX mini to the computer, there may be occasions where the Power button may not function according to the type of hard disk or computer. In such cases, you must use the adapter that has been supplied.

What is the TViX?



Enjoy your digital movies, music and photos on your TViX! TViX can be used as a multimedia jukebox, music tank, photo album and even a portable storage. TViX will bring all your digital contents right to the comfort of your living room, so you can now easily enjoy your movies, music and photos with your family and friends.

● **Multimedia Jukebox**

TViX is a portable multimedia jukebox!! TViX supports most video formats, including MPEG-1, MPEG-2 (AVI, VOB) and MPEG-4 (AVI, XviD). Over 4 GB of video file is supported under the NTFS format system and it supports the ISO file format (4GB or above). CDs and DVDs can be copied into the TViX so you can enjoy your favorite contents on TV. Download your favorite digital contents into the TViX and enjoy it at home, in your car or wherever else you please!

● **Music Tank**

Put all of your music files into the TViX and listen to all your favorite music files anytime, anywhere! TViX supports a variety of audio files such as MP3, Ogg Vorbis or WMA. You can play all your favorite digital audio files nonstop by organizing a custom playlist.

● **Photo Album**

TViX is a digital photo album which can hold up to thousands of high resolution digital photos. Take all your digital pictures and store those files in your TViX. You can now enjoy your pictures animating to your favorite music on screen! All your favorite digital pictures can be saved into this small gadget with the option of background music.

● **Portable Storage**

TViX is a portable multimedia player which fits right in your pocket. The TViX uses a 2.5" HDD as its content storage and when connected to your PC it works exactly like an external USB 2.0 hard drive.

Specification

Model		TViX C-2000U mini
Main Chipset		Sigma Design EM8511
Display		2 Individual LED
Video	Format	MPEG-1.MPEG-2 (VOB,ISO,IFO), AVI(*)
	Resolution	Upscaling (480p, 1280x720p, 1920 x 1080i)
	Output	NTSC / PAL
Audio		MP3, WMA, Ogg, PCM, AC3 DTS pass through
Photo		JPG
Connectivity		USB2.0
AV IOut	Video	Composite, S-Video, Component(**)
	Audio	Analog : Stereo / Digital : Coaxial (**)
File System		NTFS, FAT32
Sub Title		Text Subtitle: smi, sub, srt, aqt, utf, lrc Image Subtitle: sub (with idx)
Language		English, French, German, Spanish Italian, Portuguese, Swedish, Norwegian Danish, Japanese, Korean
Internal Power		DC 5V (Included in Adapter)
Dimension		82.0 x 127.5 x 20.0(mm)
Weight		81g(without HDD), 180g(with HDD)

**Some files may not play depending on other conditions

**Supported through optional AV Out box

Package contents



Main unit



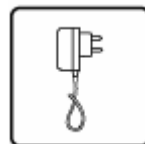
Remote control



A/V cable



USB Cable



Power Adapter



Manual



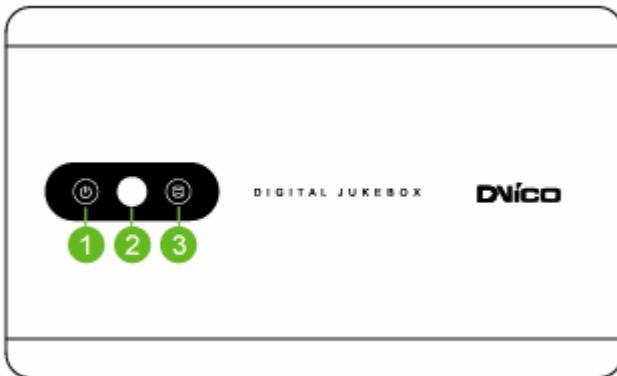
A/V Box



Audio Adapter

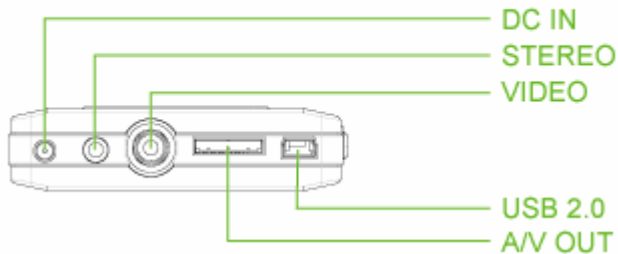
Name of each part

● Player information

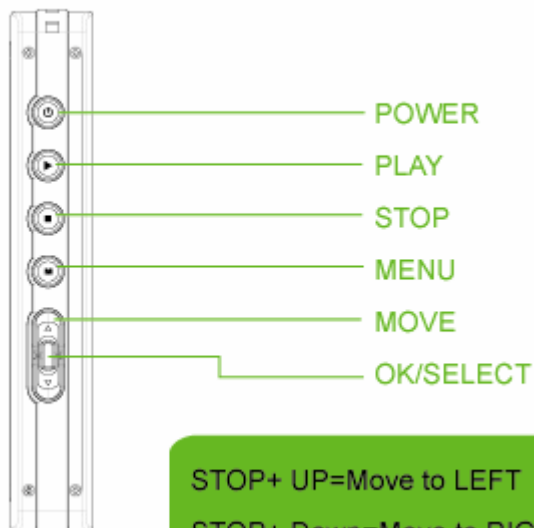


- 1 Power ON/OFF
- 2 REMOTE Receiver
- 3 HDD USE

● Cable connections



● Basic Functions

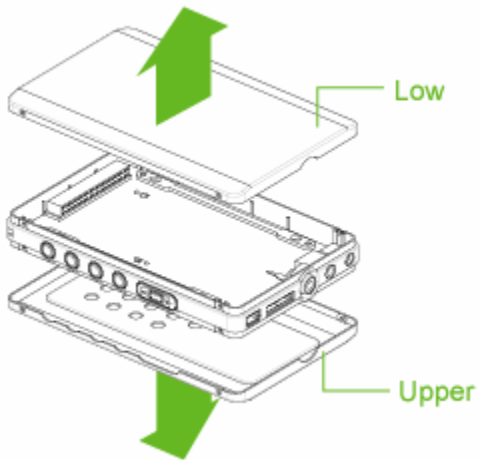


When you have to select the partition of the hard disk using the buttons on the device instead of the remote control, please refer to the following instructions.

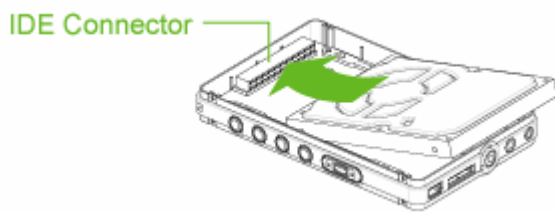
- By pressing the Stop button and Up button simultaneously, it will move left and you will be able to select the partition.
- By pressing the Stop button and Down button simultaneously, it will move right and you will be able to select a file.

HDD Installation

1) Assembling the TViX is very easy. Follow the instructions below. Separate the front and back aluminum case.



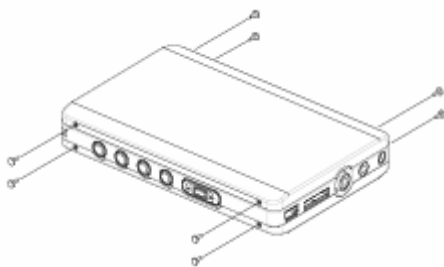
2) Place the 2.5 " HDD on the PCB board and connect the HDD to the socket on the board. Set the jumper to Single Master.



3) Screw the PCB board on to the plastic guide with the 4 large bolts.



4) Place the front and back aluminum case on the plastic guide and screw the front and back case to the plastic guide using 8 small bolts.



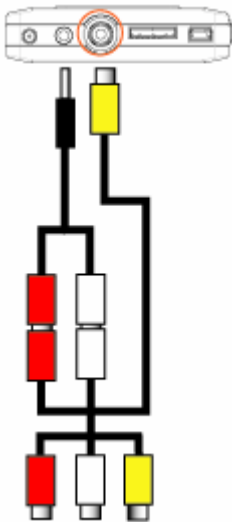
Video and Audio Connection

TViX supports 3 types of video output; "Composite, S-video, Component". Use the video connection which your TV supports. Generally a TV supports composite video connection, and this package supplies a composite video cable.

TViX supports 2 type of audio output; "Stereo, Coaxial"

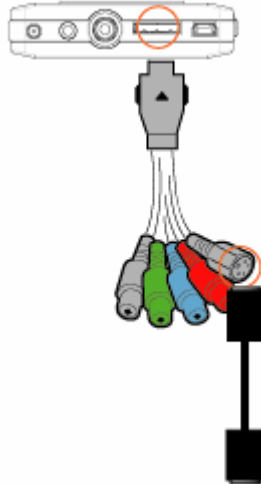
Video connection

Composite Output



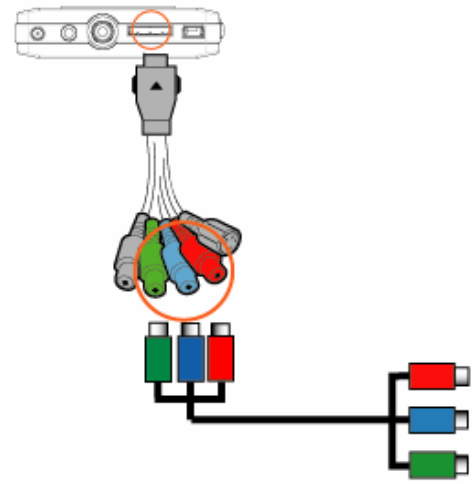
Connect the TViX and your TV using the yellow video cable.

S-Video Output



Connect the TViX and your TV using the S-Video cable (the 4 black pin)

Component Output

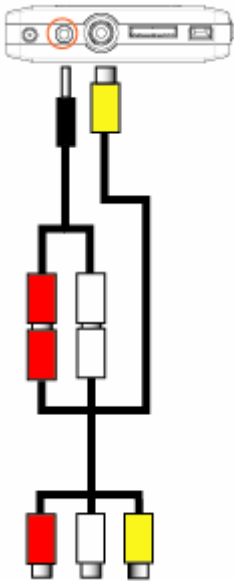


Connect the TViX and TV with the component cable as shown in the image.
Y(Green),Pb(Blue),Pr(Red)

NOTE: After connecting the video cable to your TV, repeatedly press the TV OUT button on the remote control until you get to the initial stable screen of the TViX.

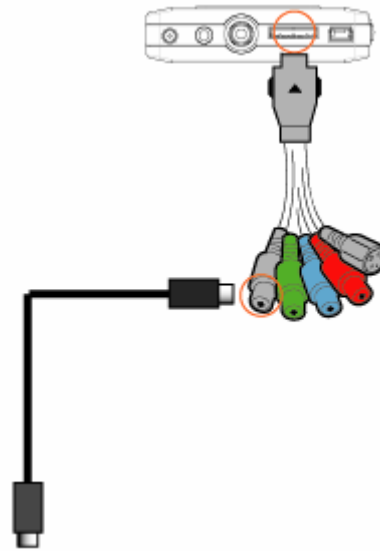
Audio connection

2 CH of a normal TV



Connect the left(white) and right(red) sound output to the appropriate terminal of your TV or Hi-Fi.

5.1CH amplifier (Digital)

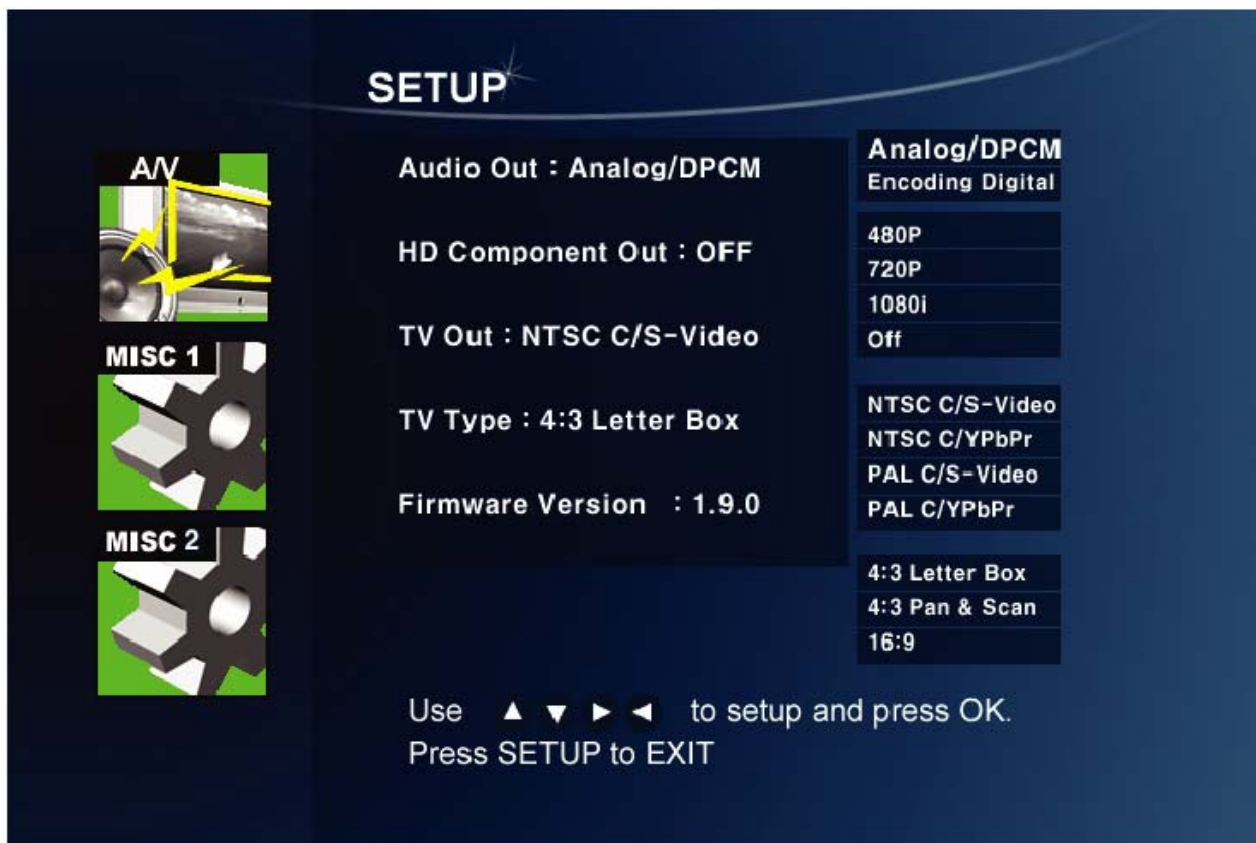


When you have a multi channel decoder/amplifier with coaxial input, you can enjoy the 5.1 CH high quality sound through the coaxial cable

NOTE: If the audio does not come out after connecting the coaxial cable to your amplifier, press the SETUP out button and change the audio output to Digital.

MENU SETUP

Audio/Video Setting



* Analog/DPCM

Select this when you connect the audio with stereo RCA cable (the Red and White cable).

* Encoded Digital

Select this when you connect the audio with coaxial cable for digital audio connection to the Decoder/Amplifier. There will be no analog audio out from the analog audio port of the TViX.

* HD Component Out

Select this when you connect the video through a component (YPbPr) cable. You can select the output resolution among 480P/720P/1080i. Setting it to 1080i will work on all HD grade TVs.

* TV Out

The default video setting of the TViX is COMPOSITE (NTSC/S-VIDEO or PAL C/S-VIDEO).

This is the most general setting and works with almost all TVs.

NTSC C/YPbPr(480i), PAL C/YPbPr(576i) is a special case. Select these settings if your TV is connected to TViX with a component output.

Note: If you fail to see the initial TViX screen after turning on the unit and TV, make sure you have chosen the right TV out option by repeatedly pressing the TV Out button on the remote control.

* **TV Type:** 4:3 Letter Box / 4:3 Pan & Scan for ordinary TVs

16:9 for Wide TVs like HDTV or Plasma TV

If the ratio of the TV is 4:3, select 4:3 letter box or 4:3 Pan & Scan. If the ratio of the TV is 16:9, select 16:9.

- ① 4:3 Letter letter box can show the original ratio of the multimedia file of 16:9.
- ② 4:3 Pan & Scan adjust the image of the 16:9 multimedia file to the 4:3 of the TV screen by cutting the image.
- ③ 16:9 can adjust any ratio of multimedia file to the TV screen with original image

* **Firmware Version:** Displays the installed firmware version (The version number may vary depending on the purchased date.)

MENU SETUP

MISC1 setting



- * **Slideshow Delay Time:** You can set the slideshow time interval (1 - 10 sec)
- * **Subtitle Font Size:** You can select the font size of the subtitle
- * **Subtitle/Outline:** You can change the color of the subtitle and its outline
- * **Font Color:** You can change the color of the font
- * **Language Selection:** Select your preference language
- * **Autorun:** You can listen to music (audio files) with no display (TV). For random play, select "shuffle"
- * **OSD:** You can turn On/Off the OSD while playing back or loading file(s).

MENU SETUP

MISC2 setting

The screenshot shows the TV's setup menu with the following content:

- AV**: Image of a speaker.
- MISC 1**: Image of two interlocking gears.
- MISC 2**: Image of two interlocking gears with a yellow arrow pointing to the right.

LEFT/RHGHT Key : Time Skip

FF/REW Key : FF/REW

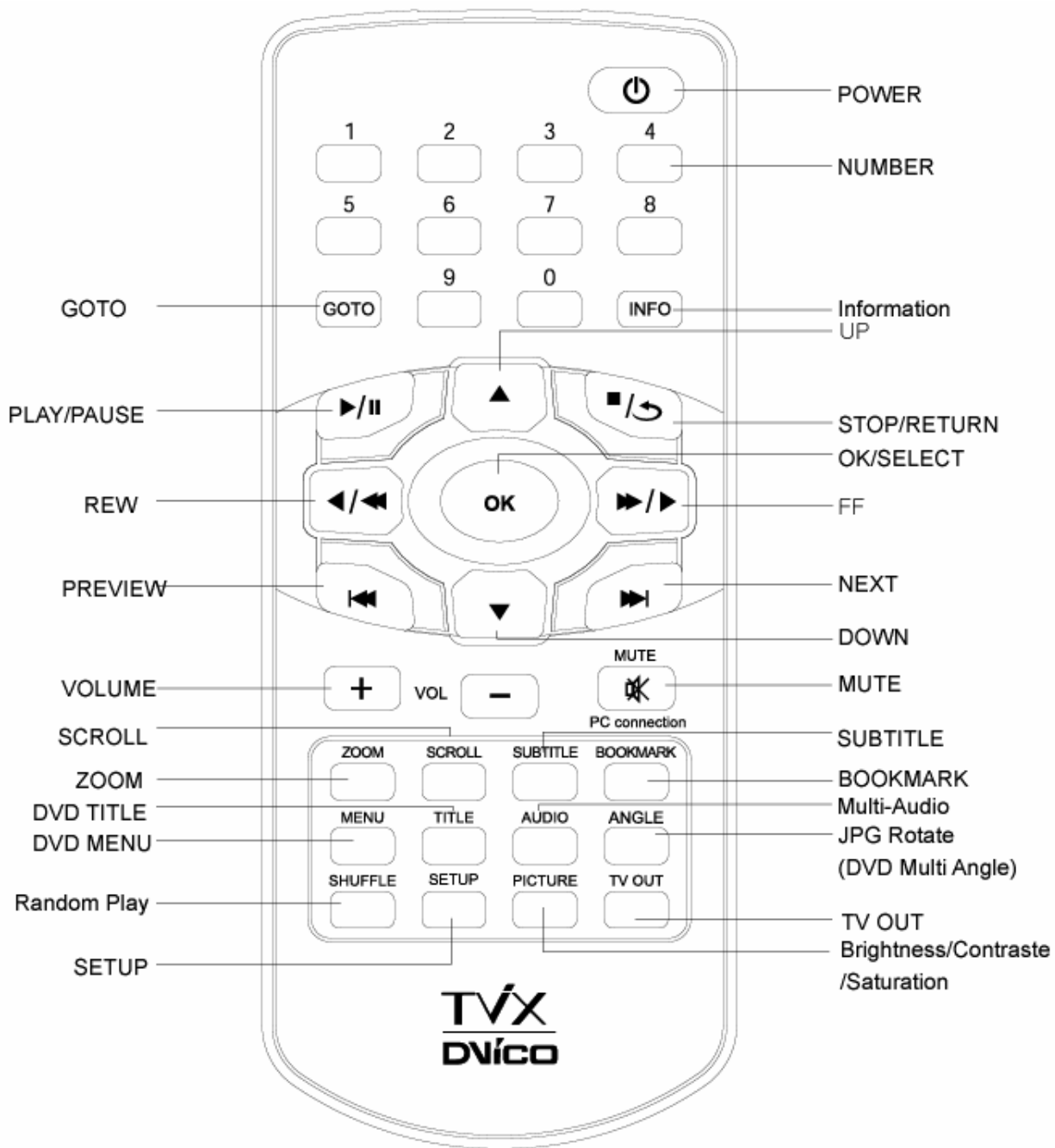
Time Skip Duration : 15 sec

FF/REW	
Time Skip	
FF/REW	
Time Skip	
10 sec	15 sec
20 sec	30 sec
40 sec	50 sec
1 min	2 min
3 min	4 min

Use ▲ ▼ ► ◀ to setup and press OK.
Press SETUP to EXIT

The FF/REW and LEFT/RIGHT buttons have been upgraded so users can select their preference. This function and the time setup can be changed with the MISC2 menu item in the setup. Instead of using the setup, you can change the time setup by pressing the up/down arrow buttons which will then display an OSD, such as '+15'.

Using Remote



VIDEO

Playback of Multimedia files

Point the arrow to the file you want and press the OK button.

● **INFO button :**

First Press : Shows the content information.

Second Press : Shows the elapsed time (The progress bar is displayed on the upper left hand corner of the screen.)

Third Press : INFO off

● **SUBTITLE button :**

Supports SMI Multi-subtitle control with the Subtitle button.

Subtitle font size is configurable on the SETUP menu.

Supports .SUB (bitmap) + .idx subtitle files

PAL format .SUB subtitles are not supported in this version. In cases where the outline cannot be applied clearly to the .SUB subtitles, you can change the color of the outline in the setup.

● **ZOOM button :**

First Press : Zoom, you can change the size by pressing the arrow buttons.

Second Press : Full screen

Third Press : PAN&SCAN full screen

Fourth Press : Zoom Off

● **PICTURE button**

Picture adjustment. Contrast --> Brightness --> Saturation.

● **TV OUT button**

NTSC Composite/SVIDEO

NTSC Composite/YPbPr(480i)

PAL Composite/SVIDEO

PAL Composite/YPbPr(576i)

YPbPr (480p) (No composite output)

YPbPr (720p) (No composite output)

YPbPr (1080i) (No composite output)

● **BOOKMARK :** If you stop a movie, the stop position will be automatically saved and can be resumed later by pressing the "bookmark" button on the remote control.

- Improved to save up to five bookmarks on five individual files. (It cannot save five bookmarks on a single file.)

- Recognizes AVI, MPG, VOB, CAT, M2P video files only.

- A video file where the folder is setup with a password cannot be saved.

- When replaying the same file, only the last play position will be saved, thus bookmarked.

- Among the bookmark list, a file deleted from the hard disk will be automatically deleted from the bookmark list as well.

● When using the GOTO function, the present playing time will be displayed.

* The VIDEO button allows you to filter video files only among the files stored in the TViX.

* You can resolve the following problems by pressing the OK button.

1) When the audio and video are not synchronized

2) When you have noise on the audio

3) When you have freezing problems.

DVD

In order to playback DVD files copied to the HDD, locate the cursor to VIDEO_TS.IFO file and press OK. Like a DVD player full DVD navigation is possible.

< DVD Jukebox KEY >

Arrow button - When a movie is playing it operates as a FF/REW button. You can move your cursor in the menu screen.

OK button - When a movie is playing it operates as a play button. In the menu screen it operates as a choose button.

PAGE-DOWN - Go to the next chapter.

PAGE-UP - Go to the previous chapter.

AUDIO button - You can change the audio. (International dubbing, DOLBY, 2CH, 5.1CH, DTS etc.)

SUBTITLE - It shows the subtitle menu.

MENU button - It shows the DVD menu screen.

TITLE button - It shows the DVD title menu.

ANGLE button - If the DVD title has an angle, you can change the angle.

GOTO button - You can choose the time, chapter and title. After choosing you can play it directly.

Number + OK – Directly view the number of the chapter.

** The operation of "PICTURE" and "VOLUME UP/DOWN" is the same as the Video operation.

AUDIO

● Shuffle Function (Random Playback)

- Press the SHUFFLE button to randomly play the files in the present directory.

- Press the Shuffle button again to exit from the shuffle mode

● Supports FF/REW, GOTO functions when playing WMA, WAV files.

● Supports lyric files (.lrc)

If the file name of a music file and .lrc file are the same, the lyrics will be displayed automatically.

● Supports ID3 TAG (ID3V1) when playing MP3 files

- Press the INFO button to view ID3 TAG (ID3V1).

- You can see additional information recorded on the MP3 files, such as the artist, album etc.

- OGG also displays basic Tag information

IMAGE

You can set the slideshow time interval in the SETUP menu.

● Some non-standard JPEG files may not be displayed

● The PICTURE button displays the Contrast → Brightness → Saturation menus in sequence.

In these menus, you can adjust the Contrast, Brightness and Saturation by pressing the left/right arrow buttons.

● The IMAGE button on the remote control will display the image files stored in the TViX.

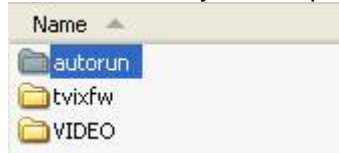
● This applies only to the active partition(s) if you have more than one partition.

Extra feature

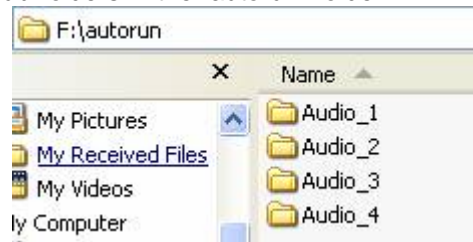
Using AutoRun

When you want to play music with the TViX, if you don't have any display devices, you can use this function usefully.

1. Make folder & name it as an "autorun" on root directory of First partition.



2. Copy a media files or make a sub-folders in the "autorun" folder.



3. If you want to change the setup, push the SETUP button on the remote. And go to MISC1' tap. Set AutoRun option on. If you set the AutoRun option off, the function will not operate. If you select the "shuffle" files are played randomly.
4. After the setting, turn off the TViX & turn it on again. The TViX will play the media file in the first (as an order) sub-folder under '/HDD1/autorun'.

<NOTE>

- The TViX will play the files in the sub-folders first and then it will play the files in '/HDD1/autorun'. After the TViX plays all media files, it will repeat from the beginning.
- When you push the 1~9 buttons on the remote during the playing, the TViX will play the first sub-folder ~ 9th sub-folder in the order.
- Now, the TViX supports only 9 sub-folders maximum. AutoRun function will work with PLAY button on the remote also (OK button will not work).

Using WinAMP Playlist (.m3u)

- (1) Connect TViX to PC.
- (2) Open the files that is stored at TViX in "Winamp" Program.
- (3) Select the folder you want at Winamp after pressing SaveList,
You should save the files at the same partition where the opened files were stored.



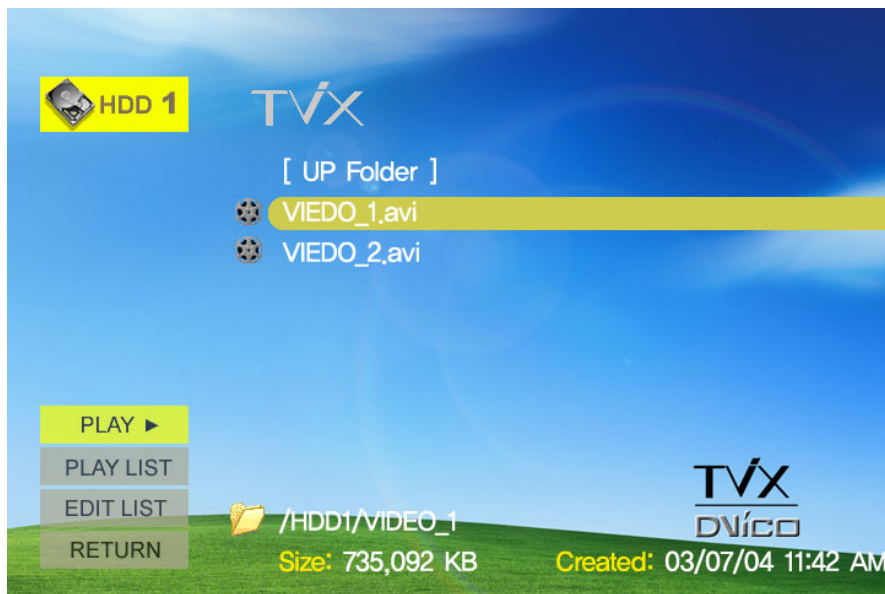
- (4) Disconnect TViX from PC/Mac safely.

Using Wallpaper

If you put a JPEG file at the name of "tvix.jpg" under the folder you want to change the wallpaper, the wallpaper of the folder is changed.



You can select any wallpaper you want by using the various JPEG files of the different folders.



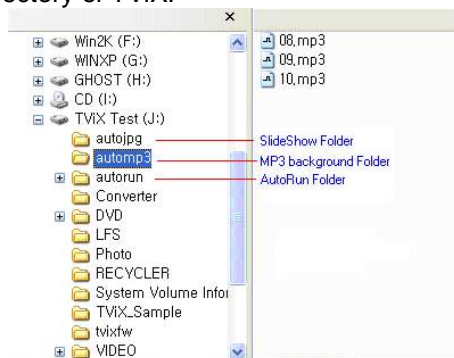
<Tip>

- If you want to change the basic wallpaper, put a JPEG file at the name of tvix.jpg under Root directory.
- In the name of "tvix.jpg", both lowercase letter and uppercase letter can be used.
- 720*480 pixel is recommended for the size of wallpaper.
(Bigger size of the wallpaper can need longer moving time. The wallpaper with high resolution may take longer loading time.)
- In Windows XP, when you name the JPEG file, "Hide Extensions for known file types" should be unchecked at Tool-Folder Option-View-File/Folder. Otherwise the JPEG file can be named as tvix.jpg.JPG and you can not see the desired wallpaper.

Playing background music while watching a picture slide show

[Make new folder for background music]

(1) Make automp3 folder in root directory of TViX.



(2) Copy the MP3 files into automp3 folder



(3) While users are watching the picture slide show, the MP3 files in automp3 will be played as its background music

[Set the existing folder for background music]

(1) Move the cursor to the folder that users wish to set as the background music.

(2) On the folder, push number 0 button to set



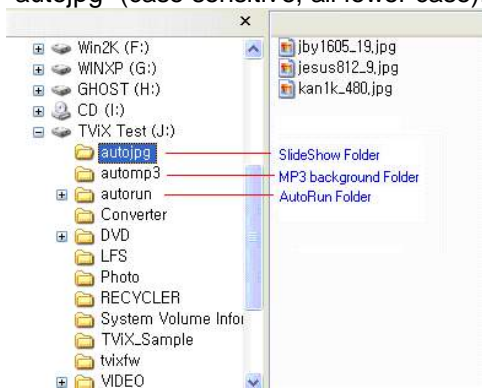
(3) Make sure that TViX show the message that the folder is set.



Displaying picture slide show while playing MP3

[Creating the default slide show folder 'autojpg' in the TViX directory]

- (1) Connect TViX to PC.
- (2) In the TViX root directory (if your HDD is multi-partitioned, use the first partition), create a folder called "autojpg" (case sensitive, all lower case).



(3) Copy your JPG files into the "autojpg" folder



- (4) Connect TViX to TV and/or Receiver
- (5) Using the JPG files from the "autojpg" folder, TViX will automatically begin the slide show when you begin playing MP3 files from the TViX directory (must use the 'Play' button on your remote to play MP3 files).

[Using the existing folders for the picture slide show]

- (1) Turn on your TViX (TViX is connected to your TV).
- (2) Place the cursor on a folder in the TViX directory that you want to set as a picture slide show folder (we will use the "Photo" folder as an example)

When playing the slideshow, JPEG images will be displayed if there are JPEG images in the MP3 folder. If there aren't any JPEG images, the contents of the autojpg folder will be displayed.



(3) After starting the music slideshow, the displayed list will automatically disappear after 5 seconds. If you wish to display the MP3 list again, press the “0” button on the remote control.



(4) TVIX will display “AUTO JPG” confirming that the folder you have selected is set as a picture slide show folder.

(5) Using the JPG files from the selected folder (“Photo” folder in this example), TVIX will automatically begin the slide show when you begin playing MP3 files from the TVIX directory (must use the ‘Play’ button on your remote to play MP3 files).

[Few tips when users are using this function]

(1) You can hide the MP3 file list while playing MP3/Slide Show by pressing the number “0” on your remote control. Pressing the number “0” again will display the MP3 list again.



(2) You can play both of your MP3 and JPG files in shuffle playing mode by pressing the “Shuffle” button to begin playing your MP3 files.

(3) If the SHUFFLE button is pressed after you have begun playing MP3 files with the “Play” button, only MP3 files will play in shuffle playing mode (JPG files will be played in order)

(4) Slide show delay time can be adjusted in the setup menu (press the “setup” button on your remote control).

* Recommended picture size for the slide show function is 1024x768 or smaller.

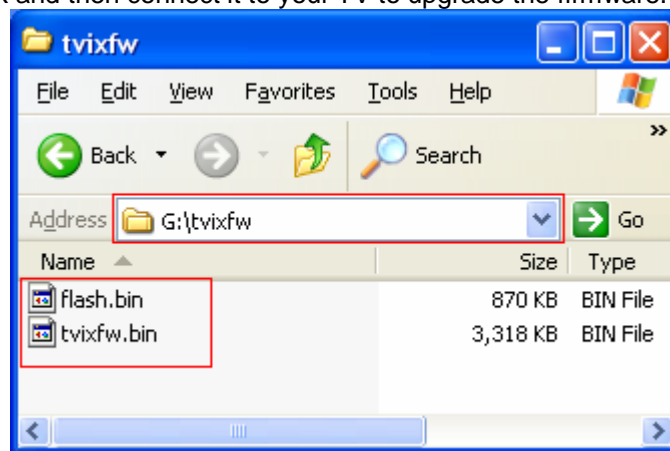
Firmware upgrade

Checking the Firmware Version

1. Connect the TViX to your TV and turn on the TViX.
 2. Press the menu button on the top panel so the setup screen can be displayed.
 3. Check for the latest firmware version of the TViX at www.tvix.co.kr
- *** You'll be posted for any firmware updates or news if you fill out the customer registration form at <http://www.tvix.co.kr>

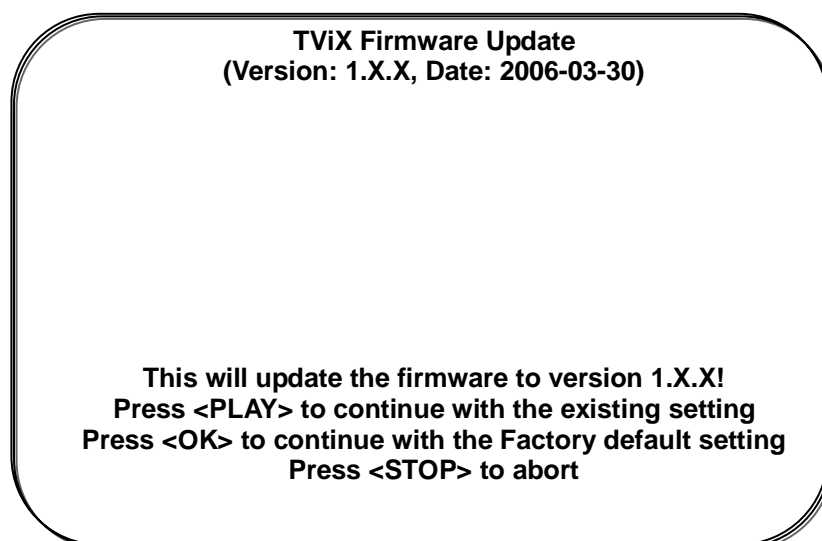
How to download the firmware

1. Download the latest firmware from <http://www.tvix.co.kr> to your PC.
2. Unzip the TViXfw.zip file and you'll have flash.bin and TViXfw.bin
3. Connect the TViX to your PC through the USB connection and turn it on.
4. Your system will recognize the TViX as an external hard drive.
5. Copy those two firmware files into the TViX fw folder of the TViX hard drive.
6. Turn off the TViX and then connect it to your TV to upgrade the firmware.

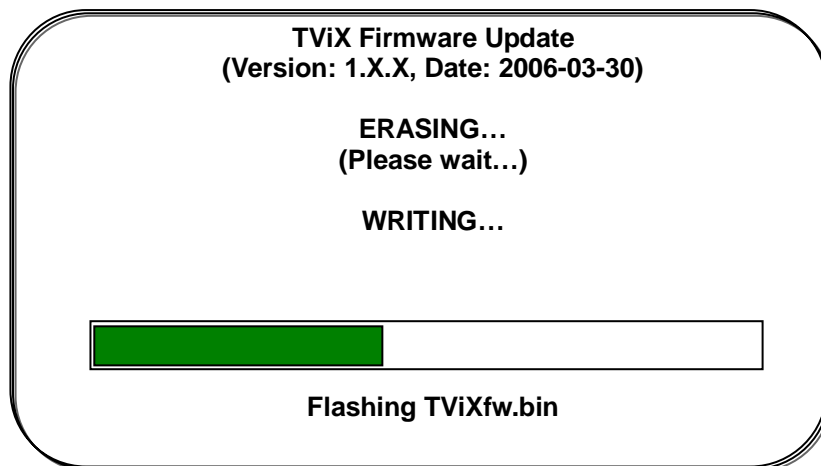
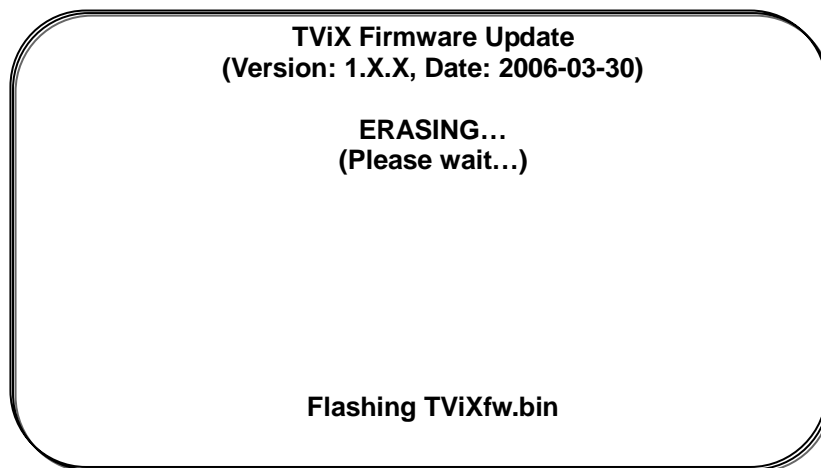


How to upgrade the firmware

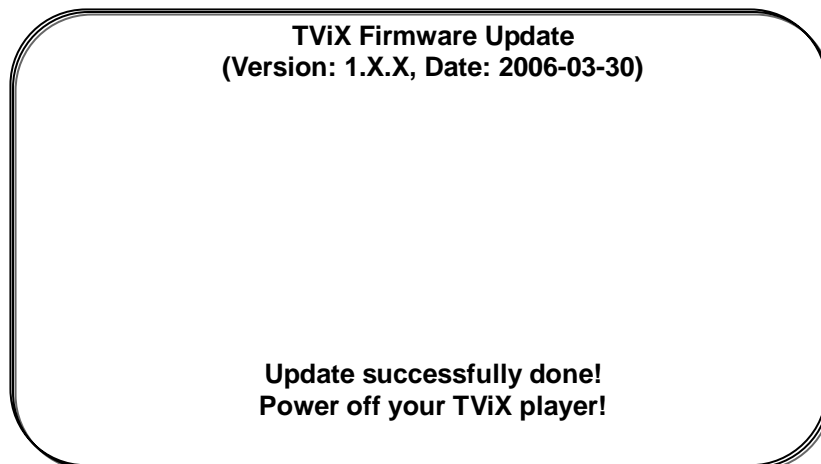
1. Connect the TViX to your TV
2. Press the menu button on the unit and turn on the TViX.
3. Keep the menu button pressed until the PLAY LED turns on.
4. The following blue screen will be displayed. Follow the instructions on the screen.



5. The new firmware upgrade is in process



6. After the upgrading has been successfully finished, turn off the TViX and then turn it on again



7. You can now use the TViX with the new firmware.

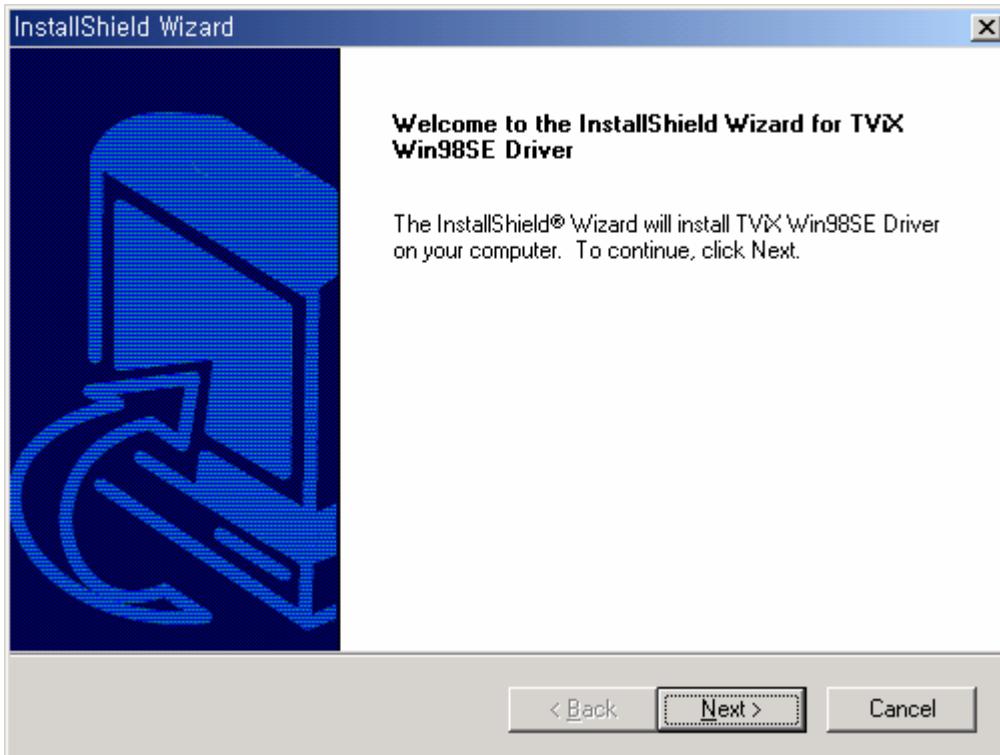
TIPS

**** Supporting safe firmware upgrade**

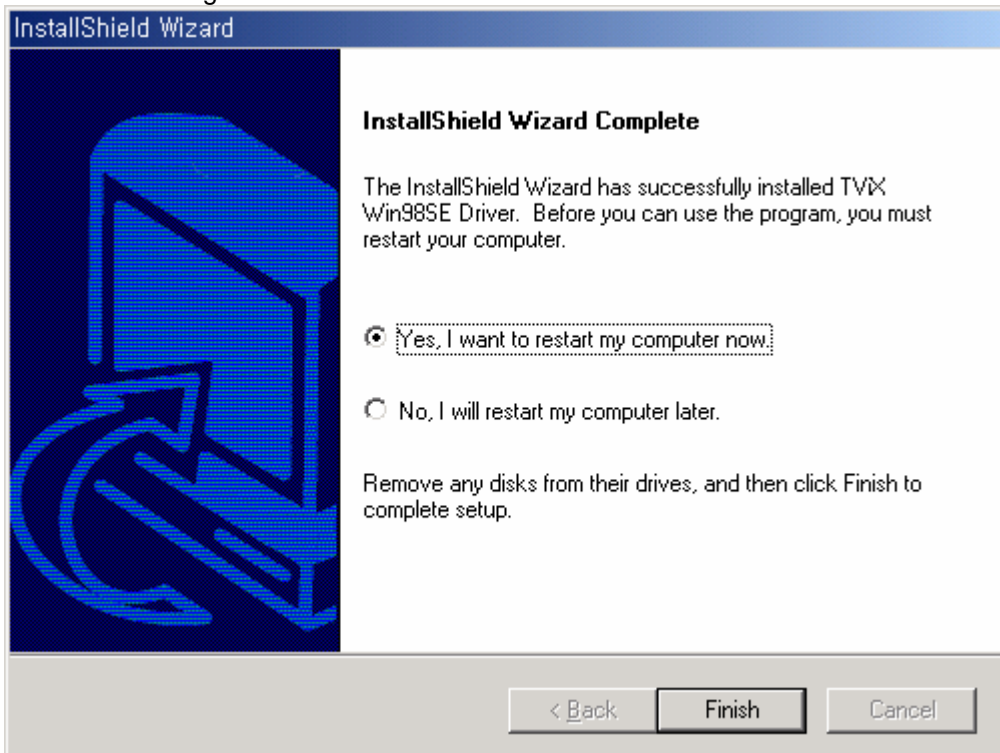
- Even if the TViX is turned off accidentally during the firmware upgrade, the safe mode will enable the TViX to upgrade with a retrial of the upgrade.

Windows 98SE Driver Installation

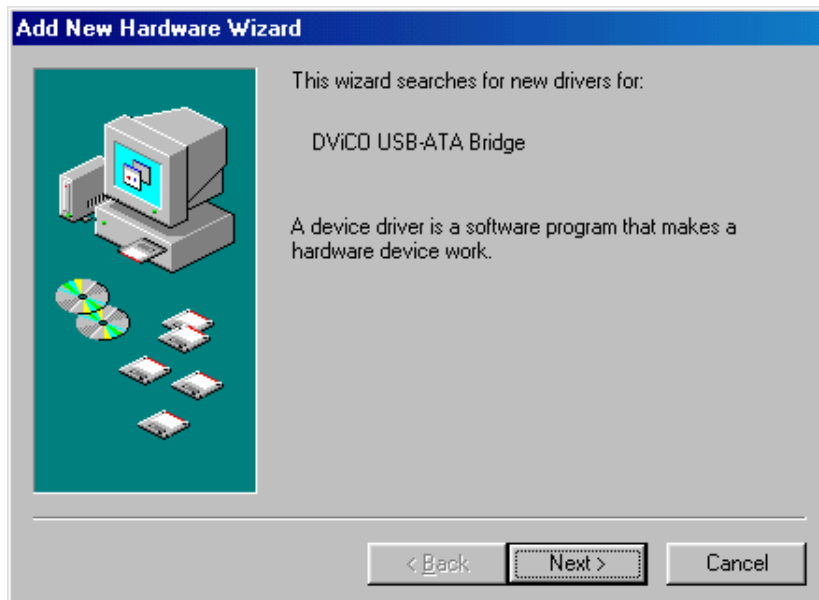
- 1) Please run setup.exe file inside the install CD before connecting it to the TViX. Click "Next" at the following pop up screen.



- 2) Please reboot after clicking the "Finish" button.



- 3) Connect the TViX after rebooting the system. "Add New Hardware Wizard" will automatically pop up.



4) Select "Search for the best driver for your device" menu and then press the "Next" button.



5) Do not check any of the menus. Proceed directly to "Next".



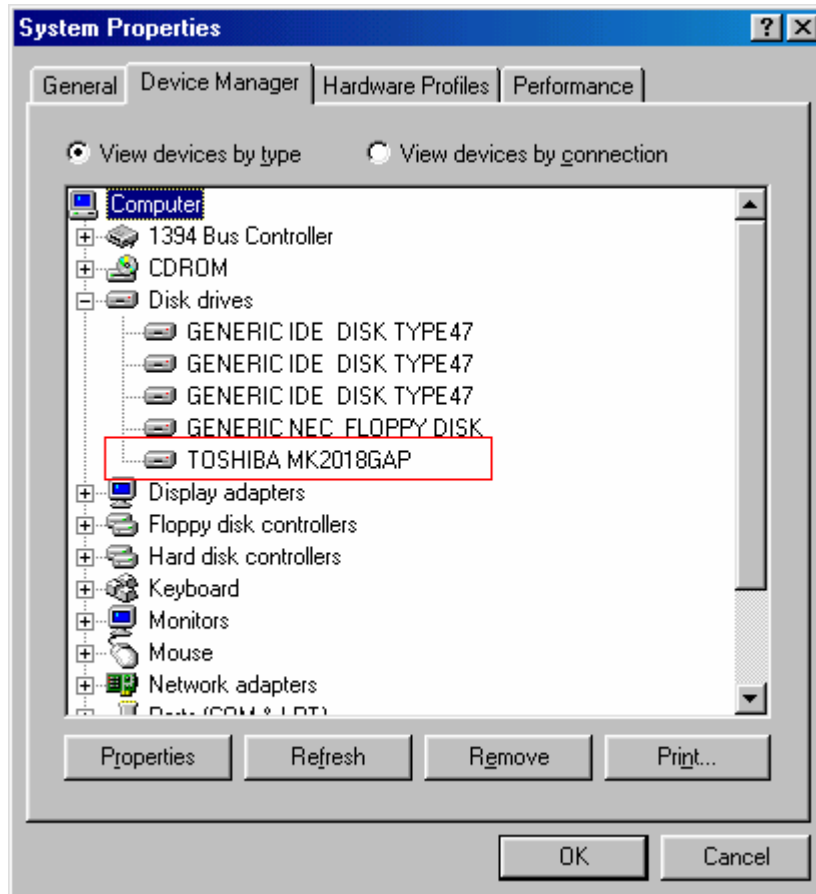
6) The system will automatically find "DVICO USB-ATA Bridge" as shown in the image below. Click "Next".



7) By pressing the "Finish" button, the driver installation will be completed.

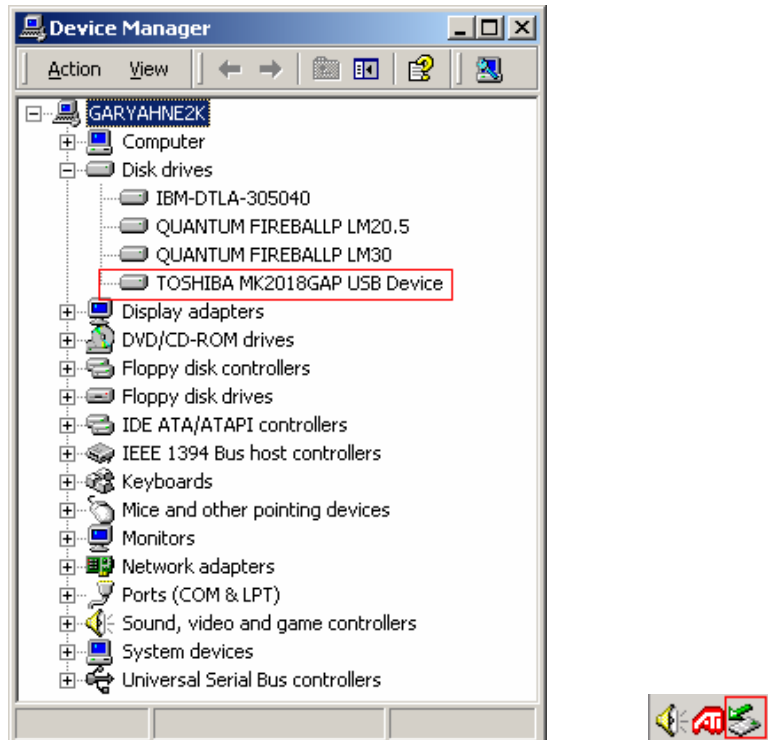


8) You will be able to see the disk drive inside the TViX on the Device Manager tab.




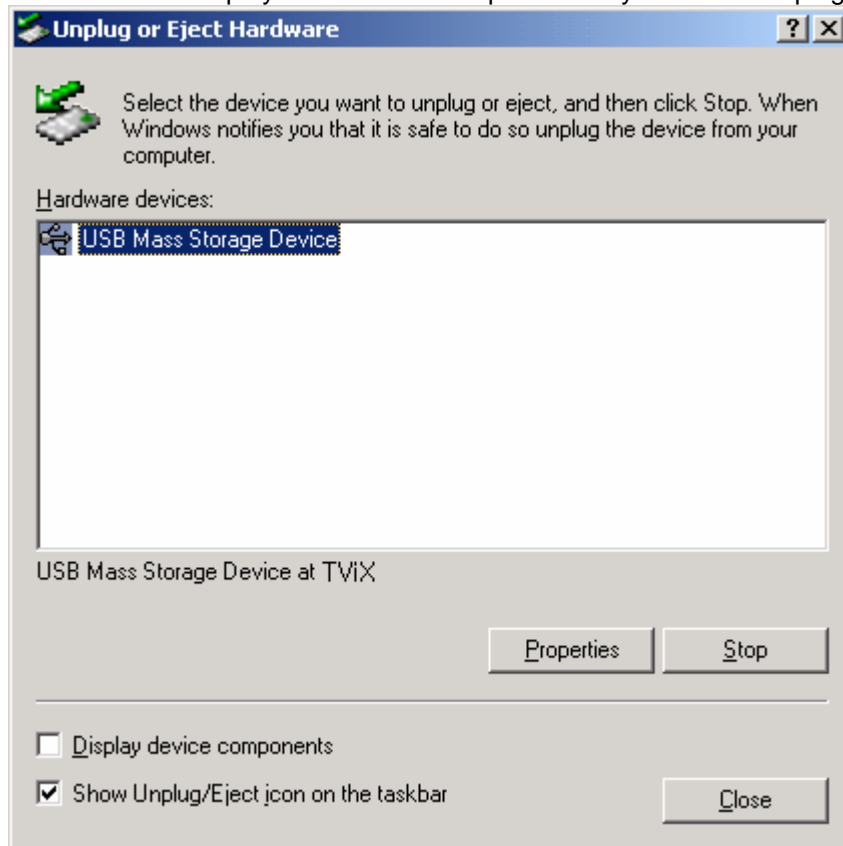
TIP

Windows ME or Windows 2000, XP offer driver by itself. so you don't need to install software. If connect TViX, run Plug & Play. Right click the "My computer" icon → properties → hardware → device manager to see TViX is properly installed



Unplug or eject hardware

- 1) When you double click the hot swap icon on the windows tray,  the "Unplug or Eject Hardware" window will be displayed. Press the "Stop" button if you want to unplug the device.



- 2) When "Stop a Hardware device" window is displayed, click the "OK" button.



- 3) Click OK and unplug the device.



Technical Support

If you have attempted to resolve problems with your TViX without success and still require assistance, please contact us at tvixcs@dvico.com

You can also check out our technical support page (Download & TViX_FAQ) at the following sites:

<http://www.TViX.co.kr/ENG/download/Default.aspx?tabindex=3>

http://www.tvix.co.kr/eng/Products/TVix_UserFAQ.aspx

Firmware updates are available for download and will be posted on our websites.

GNU General Public License

Dvico Co., Ltd is using a part of Free Software code under the GNU General Public License in operating TViX player. This General Public License applies to most of the Free Software Foundation's code and to any other program whose authors commit by using it. The Free Software is copyrighted by Free Software Foundation, Inc. and the program is licensed "As is" without warranty of any kind. Users are free to download the base source code of the Dvico TViX players at the following Address: www.tvix.co.kr/gpl The source code can be sent to your address via airmail for a charge of actual expense executed. Please contact us at sales@dvico.com

[GNU GENERAL PUBLIC LICENSE](#)

Version 2, June 1991

Copyright (C) 1989, 1991 Free Software Foundation, Inc.
51 Franklin Street, Fifth Floor, Boston, MA 02110-1301, USA

Everyone is permitted to copy and distribute verbatim copies of this license document, but changing it is not allowed.

[Preamble](#)

The licenses for most software are designed to take away your freedom to share and change it. By contrast, the GNU General Public License is intended to guarantee your freedom to share and change free software--to make sure the software is free for all its users. This General Public License applies to most of the Free Software Foundation's software and to any other program whose authors commit to using it. (Some other Free Software Foundation software is covered by the GNU Lesser General Public License instead.) You can apply it to your programs, too.

When we speak of free software, we are referring to freedom, not price. Our General Public Licenses are designed to make sure that you have the freedom to distribute copies of free software (and charge for this service if you wish), that you receive source code or can get it if you want it, that you can change the software or use pieces of it in new free programs; and that you know you can do these things.

To protect your rights, we need to make restrictions that forbid anyone to deny you these rights or to ask you to surrender the rights. These restrictions translate to certain responsibilities for you if you distribute copies of the software, or if you modify it.

For example, if you distribute copies of such a program, whether gratis or for a fee, you must give the recipients all the rights that you have. You must make sure that they, too, receive or can get the source code. And you must show them these terms so they know their rights.

We protect your rights with two steps: (1) copyright the software, and (2) offer you this license which gives you legal permission to copy, distribute and/or modify the software.

Also, for each author's protection and ours, we want to make certain that everyone understands that there is no warranty for this free software. If the software is modified by someone else and passed on, we want its recipients to know that what they have is not the original, so that any problems introduced by others will not reflect on the original authors' reputations.

Finally, any free program is threatened constantly by software patents. We wish to avoid the danger that redistributors of a free program will individually obtain patent licenses, in effect making the program proprietary. To prevent this, we have made it clear that any patent must be licensed for everyone's free use or not licensed at all.

The precise terms and conditions for copying, distribution and modification follow.

TERMS AND CONDITIONS FOR COPYING, DISTRIBUTION AND MODIFICATION

0. This License applies to any program or other work which contains a notice placed by the copyright holder saying it may be distributed under the terms of this General Public License. The "Program", below, refers to any such program or work, and a "work based on the Program" means either the Program or any derivative work under copyright law: that is to say, a work containing the Program or a portion of it, either verbatim or with modifications and/or translated into another language. (Hereinafter, translation is included without limitation in the term "modification".) Each licensee is addressed as "you".

Activities other than copying, distribution and modification are not covered by this License; they are outside its scope. The act of running the Program is not restricted, and the output from the Program is covered only if its contents constitute a work based on the Program (independent of having been made by running the Program). Whether that is true depends on what the Program does.

1. You may copy and distribute verbatim copies of the Program's source code as you receive it, in any medium, provided that you conspicuously and appropriately publish on each copy an appropriate copyright notice and disclaimer of warranty; keep intact all the notices that refer to this License and to the absence of any warranty; and give any other recipients of the Program a copy of this License along with the Program.

You may charge a fee for the physical act of transferring a copy, and you may at your option offer warranty protection in exchange for a fee.

2. You may modify your copy or copies of the Program or any portion of it, thus forming a work based on the Program, and copy and distribute such modifications or work under the terms of Section 1 above, provided that you also meet all of these conditions:

- a)** You must cause the modified files to carry prominent notices stating that you changed the files and the date of any change.
- b)** You must cause any work that you distribute or publish, that in whole or in part contains or is derived from the Program or any part thereof, to be licensed as a whole at no charge to all third parties under the terms of this License.
- c)** If the modified program normally reads commands interactively when run, you must cause it, when started running for such interactive use in the most ordinary way, to print or display an announcement including an appropriate copyright notice and a notice that there is no warranty (or else, saying that you provide a warranty) and that users may redistribute the program under these conditions, and telling the user how to view a copy of this License. (Exception: if the Program itself is interactive but does not normally print such an announcement, your work based on the Program is not required to print an announcement.)

These requirements apply to the modified work as a whole. If identifiable sections of that work are not derived from the Program, and can be reasonably considered independent and separate works in themselves, then this License, and its terms, do not apply to those sections when you distribute them as separate works. But when you distribute the same sections as part of a whole which is a work based on the Program, the distribution of the whole must be on the terms of this License, whose permissions for other licensees extend to the entire whole, and thus to each and every part regardless of who wrote it.

Thus, it is not the intent of this section to claim rights or contest your rights to work written entirely by you; rather, the intent is to exercise the right to control the distribution of derivative or collective works based on the Program.

In addition, mere aggregation of another work not based on the Program with the Program (or with a work based on the Program) on a volume of a storage or distribution medium does not bring the other work under the scope of this License.

3. You may copy and distribute the Program (or a work based on it, under Section 2) in object code or executable form under the terms of Sections 1 and 2 above provided that you also do one of the following:

- a)** Accompany it with the complete corresponding machine-readable source code, which must be distributed under the terms of Sections 1 and 2 above on a medium customarily used for software interchange; or,

- b)** Accompany it with a written offer, valid for at least three years, to give any third party, for a charge no more than your cost of physically performing source distribution, a complete machine-readable copy of the corresponding source code, to be distributed under the terms of Sections 1 and 2 above on a medium customarily used for software interchange; or,
- c)** Accompany it with the information you received as to the offer to distribute corresponding source code. (This alternative is allowed only for noncommercial distribution and only if you received the program in object code or executable form with such an offer, in accord with Subsection b above.)

The source code for a work means the preferred form of the work for making modifications to it. For an executable work, complete source code means all the source code for all modules it contains, plus any associated interface definition files, plus the scripts used to control compilation and installation of the executable. However, as a special exception, the source code distributed need not include anything that is normally distributed (in either source or binary form) with the major components (compiler, kernel, and so on) of the operating system on which the executable runs, unless that component itself accompanies the executable.

If distribution of executable or object code is made by offering access to copy from a designated place, then offering equivalent access to copy the source code from the same place counts as distribution of the source code, even though third parties are not compelled to copy the source along with the object code.

4. You may not copy, modify, sublicense, or distribute the Program except as expressly provided under this License. Any attempt otherwise to copy, modify, sublicense or distribute the Program is void, and will automatically terminate your rights under this License. However, parties who have received copies, or rights, from you under this License will not have their licenses terminated so long as such parties remain in full compliance.

5. You are not required to accept this License, since you have not signed it. However, nothing else grants you permission to modify or distribute the Program or its derivative works. These actions are prohibited by law if you do not accept this License. Therefore, by modifying or distributing the Program (or any work based on the Program), you indicate your acceptance of this License to do so, and all its terms and conditions for copying, distributing or modifying the Program or works based on it.

6. Each time you redistribute the Program (or any work based on the Program), the recipient automatically receives a license from the original licensor to copy, distribute or modify the Program subject to these terms and conditions. You may not impose any further restrictions on the recipients' exercise of the rights granted herein. You are not responsible for enforcing compliance by third parties to this License.

7. If, as a consequence of a court judgment or allegation of patent infringement or for any other reason (not limited to patent issues), conditions are imposed on you (whether by court order, agreement or otherwise) that contradict the conditions of this License, they do not excuse you from the conditions of this License. If you cannot distribute so as to satisfy simultaneously your obligations under this License and any other pertinent obligations, then as a consequence you may not distribute the Program at all. For example, if a patent license would not permit royalty-free redistribution of the Program by all those who receive copies directly or indirectly through you, then the only way you could satisfy both it and this License would be to refrain entirely from distribution of the Program.

If any portion of this section is held invalid or unenforceable under any particular circumstance, the balance of the section is intended to apply and the section as a whole is intended to apply in other circumstances.

It is not the purpose of this section to induce you to infringe any patents or other property right claims or to contest validity of any such claims; this section has the sole purpose of protecting the integrity of the free software distribution system, which is implemented by public license practices. Many people have made generous contributions to the wide range of software distributed through that system in reliance on consistent application of that system; it is up to the author/donor to decide if he or she is willing to distribute software through any other system and a licensee cannot impose that choice.

This section is intended to make thoroughly clear what is believed to be a consequence of the rest of this License.

8. If the distribution and/or use of the Program is restricted in certain countries either by patents or by copyrighted interfaces, the original copyright holder who places the Program under this License may add an

explicit geographical distribution limitation excluding those countries, so that distribution is permitted only in or among countries not thus excluded. In such case, this License incorporates the limitation as if written in the body of this License.

9. The Free Software Foundation may publish revised and/or new versions of the General Public License from time to time. Such new versions will be similar in spirit to the present version, but may differ in detail to address new problems or concerns.

Each version is given a distinguishing version number. If the Program specifies a version number of this License which applies to it and "any later version", you have the option of following the terms and conditions either of that version or of any later version published by the Free Software Foundation. If the Program does not specify a version number of this License, you may choose any version ever published by the Free Software Foundation.

10. If you wish to incorporate parts of the Program into other free programs whose distribution conditions are different, write to the author to ask for permission. For software which is copyrighted by the Free Software Foundation, write to the Free Software Foundation; we sometimes make exceptions for this. Our decision will be guided by the two goals of preserving the free status of all derivatives of our free software and of promoting the sharing and reuse of software generally.

NO WARRANTY

11. BECAUSE THE PROGRAM IS LICENSED FREE OF CHARGE, THERE IS NO WARRANTY FOR THE PROGRAM, TO THE EXTENT PERMITTED BY APPLICABLE LAW. EXCEPT WHEN OTHERWISE STATED IN WRITING THE COPYRIGHT HOLDERS AND/OR OTHER PARTIES PROVIDE THE PROGRAM "AS IS" WITHOUT WARRANTY OF ANY KIND, EITHER EXPRESSED OR IMPLIED, INCLUDING, BUT NOT LIMITED TO, THE IMPLIED WARRANTIES OF MERCHANTABILITY AND FITNESS FOR A PARTICULAR PURPOSE. THE ENTIRE RISK AS TO THE QUALITY AND PERFORMANCE OF THE PROGRAM IS WITH YOU. SHOULD THE PROGRAM PROVE DEFECTIVE, YOU ASSUME THE COST OF ALL NECESSARY SERVICING, REPAIR OR CORRECTION.

12. IN NO EVENT UNLESS REQUIRED BY APPLICABLE LAW OR AGREED TO IN WRITING WILL ANY COPYRIGHT HOLDER, OR ANY OTHER PARTY WHO MAY MODIFY AND/OR REDISTRIBUTE THE PROGRAM AS PERMITTED ABOVE, BE LIABLE TO YOU FOR DAMAGES, INCLUDING ANY GENERAL, SPECIAL, INCIDENTAL OR CONSEQUENTIAL DAMAGES ARISING OUT OF THE USE OR INABILITY TO USE THE PROGRAM (INCLUDING BUT NOT LIMITED TO LOSS OF DATA OR DATA BEING RENDERED INACCURATE OR LOSSES SUSTAINED BY YOU OR THIRD PARTIES OR A FAILURE OF THE PROGRAM TO OPERATE WITH ANY OTHER PROGRAMS), EVEN IF SUCH HOLDER OR OTHER PARTY HAS BEEN ADVISED OF THE POSSIBILITY OF SUCH DAMAGES.